

Adventure Pack/Pouch

Supplies:

Printable PDF's
30" cord (necklace)
30" Belt
Velcro: two @ 6 inches , two @ 2 inches
Utility canvas and printed fabric (18" x 24")
Lightweight fusible interfacing
Medium-weight sew-in interfacing
Leather scraps for handle and belt loop pieces
Leather awl
Embroidery floss
2inch natural button (for looks)
Jewelry hook
Industrial Strength glue

Step 1: Iron on fusible interfacing to canvas piece. Sew on belt loops to the RIGHT SIDE (RS) of the back of your canvas piece. Reference "pouch guide" PDF for placement.

Step 2: fold necklace loops in half RS together along fold line and sew at 3/8". Press seam open and trim to 1/8". Press loop flat with seam allowance centered along the back.

Step 3: Sew necklace loops to canvas using the pouch guide as a reference. Trim away seam allowance to 1/8" if desired.

Step 4: Using an awl, poke holes in leather handle where indicated on the pattern piece. Fold lower edge of handles in half Wrong Sides (WS) together and hand stitch holes together using a basic Japanese binding stitch. Sew handles to canvas where indicated on pouch guide.

Step 5: Pin your two - 1 inch strips of sew-in interfacing to edges of WS of utility canvas where shown on pattern pieces.

Step 6: Sew Velcro to RS of canvas where indicated on pouch guide and to RS of lining where indicated at the flap.

Step 7: Now pin canvas and lining together with RS together. Starting along the lower straight edge, sew pieces together at 1/4" seam allowance leaving a small opening to pull fabric through to RS out.

Step 8: Sew 6" strips of Velcro to edges of belt. Using industrial strength jewelry glue, adhere necklace cord and hardware together. Allow to cure.

Step 9: Hand sew side panels to pouch along the very edge of the pouch. Leaving a 1/4" seam allowance on the raw edge of the side panel piece.

Step 10 (optional): sew button onto front of flap for looks.

Wear pouch as a necklace or as a belt!



(Flap area from lower line to top)

1" medium weight sew-in interfacing laid
between solid and broken line

BACK
OF
BAG
(5 1/2 H")

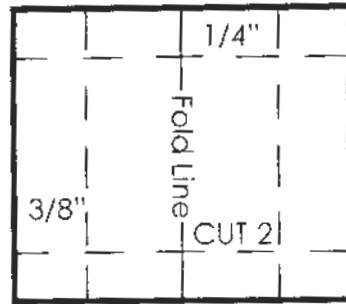
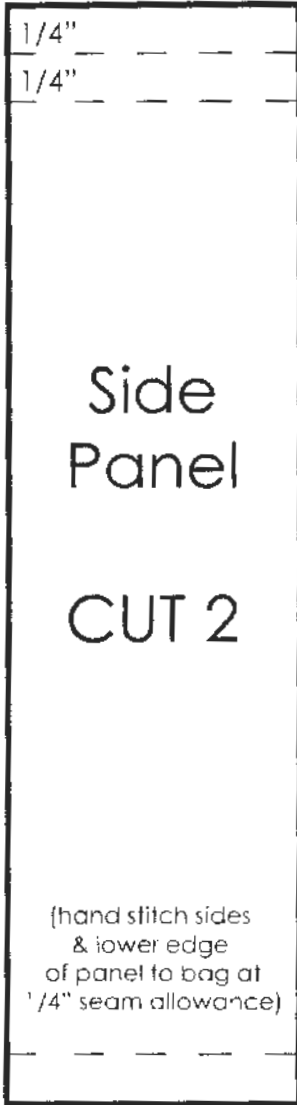
(5 1/2 H")

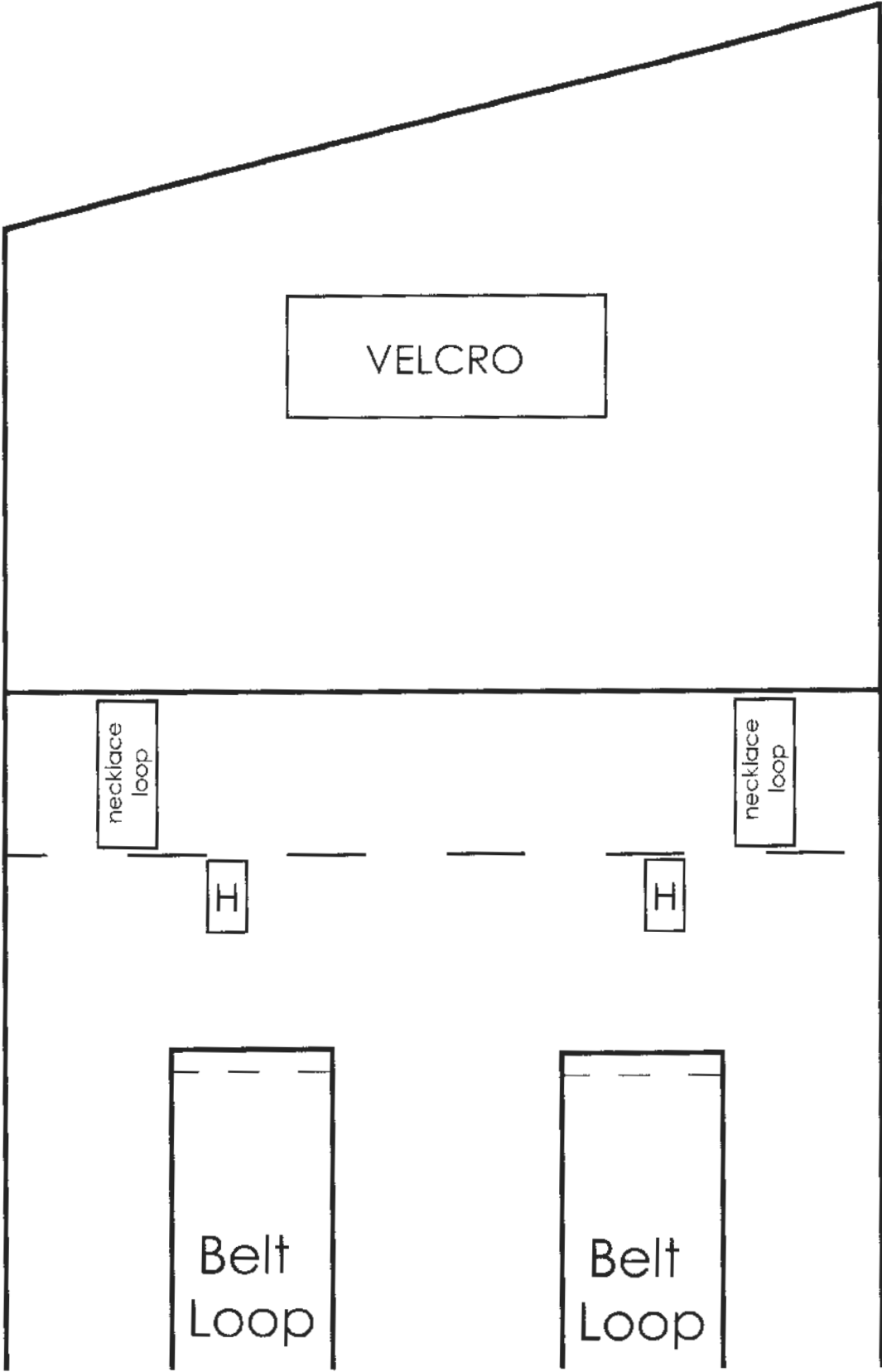
CUT 2

1" medium weight sew-in interfacing laid
between solid and broken line

FRONT
OF
BAG
(5")

1/4" seam allowance





Loop

Loop

1" medium weight sew-in interfacing laid
between solid and broken line

VELCRO

1/4" seam allowance